



WHY LEARN THE HARD WAY? OBEY THE SAFETY RULES!

SAFETY STATISTICS UP TO 31 DECEMBER 2009

Lost Time Incidents (LTIs)

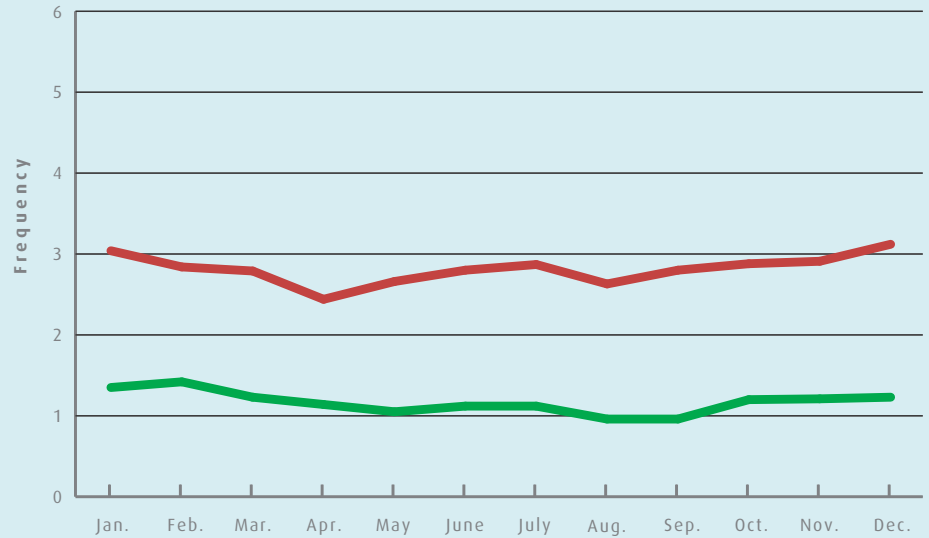
January	0
February	2
March	0
April	0
May	2
June	1
July	1
August	1
September	2
October	3
November	1
December	2

LPG statistics included up to 1st November 2009

ALL TANKERS

12 month running

TRCF: Number of LTAs, RWAs and Medical Treatment Cases pr 1.000.000 exposure hours.
 LTIF: Number of Lost Time Incidents pr 1.000.000 exposure hours.



LPG statistics included up to 1st November 2009.

All tank ships - 12 months running average LTI and TRC frequency

LTIF: VLCC/Large Product	0.43	Sml Prod/Chemical	1.75	LNG	0.00
TRCF: VLCC/Large Product	4.28	Sml Prod/Chemical	3.18	LNG	0.00

LOST TIME INCIDENTS

LTI – Chemical Carrier

The Injured Person was moving a 175kg cargo heater on top of deck trunk by means of a sack truck. The cargo heater was secured to sack truck by means of a rope. Moving one wheel of the sack the truck hit an obstructing manhole cover and tilted to one side. Due to this the injured person lost his balance due to the sudden movement of the sack truck his left foot was trapped below the cargo heater. The IP severely sprained his right foot and also injured his wrist.

A blackbox accident investigation was conducted on board that identified better planning before starting the task was required. This would have resulted in the manhole being identified as a potential hazard before the task was started.

LTI – Product Carrier

The Injured Person woke up during the night for a drink of water and in the process injured his right little toe and foot on an object giving to swelling and pain.

A blackbox accident investigation was conducted that concluded a lack of attention and due care was the primary cause of this incident.

Lost Time Accidents Follow Up

As a result of the accident investigation we have decided that gloves are no longer to be used on fixed rotational equipment such as lathe, drill, grinder etc. This change will be reflected in the next update to TGSMS.

